

Testimony on:

**CANCER CARE PAYMENT REFORM ACT (H.R.
1934)**

United States House of Representatives

Committee on Energy and Commerce

Subcommittee on Health Care

Examining Potential Ways to Improve the Medicare Program

Washington, DC

October 1, 2015

Bruce Gould, MD

Medical Director, Northwest Georgia Oncology Centers, P.C.

President, Community Oncology Alliance

Testimony Summary

Committee on Energy and Commerce, Subcommittee on Health

Examining Potential Ways to Improve the Medicare Program

Bruce Gould, MD

Medical Director, Northwest Georgia Oncology Centers, P.C.

President, Community Oncology Alliance

- I implore Congress to pass the *Cancer Care Payment Reform Act* (H.R. 1934), a bipartisan bill introduced by Representatives Cathy McMorris Rodgers and Steve Israel. This bill lays out the specific plans for a demonstration project based on the Oncology Home Model. It builds upon the successful models that have already been tested in oncology payment reform with both private payers and CMS.
- Community oncology practices like ours want to be part of the alternative payment reform path that the Energy and Commerce committee developed in the SGR legislation; however, we need a Medicare alternative payment model in oncology for that to happen. H.R. 1934 is a critical bridge to getting us to that point.
- My practice has participated in several oncology payment reform pilots with both private payers and Medicare, through a CMMI grant. These have proven very successful in enhancing the quality of cancer care and reducing costs. Many of the concepts in these successful programs have been incorporated into H.R. 1934 by Congresswoman McMorris Rodgers
- I ask Congress to pass this important legislation that will lower the costs of cancer care while enhancing the quality of care for patients.

Chairman Pitts, Ranking Member Green, and members of the committee — I thank you for the opportunity to share my views on payment reform in oncology and, specifically, on the Cancer Care Payment Reform Act, H.R. 1934.

I am a practicing medical oncologist and medical director of Northwest Georgia Oncology Centers, a private community oncology practice headquartered in Marietta, Georgia. Additionally, I serve as President of the Community Oncology Alliance (COA), a non-profit organization dedicated to advocating for community oncology practices and, most importantly, for the patients they serve. Close to 70% of Americans with cancer are treated by private practice clinics. I finally want to mention, and of relevance here, that I am the son of two parents who passed away from cancer.

Community oncology practices such as mine have been struggling from major cuts to reimbursement by Medicare. For example, the decision by CMS to apply sequestration to the underlying costs of cancer drugs has led to many drugs being reimbursed for less than their acquisition price. As a result, over 300 practices have closed treatment sites and, more significantly, close to 550 practices have merged with hospital systems. The data is clear on the consolidation of cancer care in the United States: it is creating access to care problems for patients in rural areas and, very significantly, increasing the cost of cancer care for seniors and the Medicare program. This unwanted trend has been documented by reports this year by the GAO and MedPAC.

Despite reimbursement pressures from Medicare, our practice years ago made a decision to ambitiously transform ourselves into a patient-centric Oncology Medical Home. Our

goal was simple — to better control the costs of cancer care while enhancing the quality of the patient experience. Among other things, we improved care coordination for our patients, established a structured triage, initiated a comprehensive patient satisfaction survey, and developed our own guidelines. One benefit of this transformation is that same day appointments are readily available in our nine clinics. Therefore, if our patients are ill, they can come to our clinics rather than go to the hospital emergency rooms. Medicare monies are saved by avoidance of needless emergency room visits and hospitalizations, and patients are happier by not being subjected to hours waiting in the emergency room. Our hard work has recently been recognized by the Commission on Cancer through their accreditation of our practice as one of the first Oncology Medical Homes.

Our dedication to value based care has lead us to partnering with private payers and CMS on oncology payment reform pilots. One program we and several others completed with UnitedHealthcare resulted in cancer care savings of 34% as compared to a case control group. The results were published in the peer-reviewed *Journal of Oncology Practice*, a copy of which I have submitted with my remarks for the record.

We are also part of a national, \$19 million grant from the Centers for Medicare & Medicaid Innovation (CMMI). This grant funded the “COME HOME” pilot which was designed to be a real world test of the Oncology Medical Home tenants. Findings from NORC at the University of Chicago, the independent research entity CMMI contracted with to measure results, were nothing short of remarkable. They showed an overall reduction of cancer care costs due to reduced hospitalizations, readmissions, and

emergency department utilizations. I have included these results with my written testimony.

I am here today to implore the Congress to immediately pass the Cancer Care Payment Reform Act (H.R. 1934), a bipartisan bill introduced by Representatives Cathy McMorris Rodgers and Steve Israel. This bill lays out the specific plans for a demonstration project based on the Oncology Medical Home. It builds upon the successful models that have already been tested in oncology payment reform with both private payers and CMS. I commend Mrs. McMorris Rodgers for reaching out to practicing community oncologists for help in crafting her bill. In addition to support from oncologists, her legislation also has the support of patient groups, private payers, biotech companies, and pharmaceutical distributors.

I also commend Congress for passing a fix to the SGR along with a path to meaningful payment reform. Community oncology practices like mine want to be part of the alternative payment reform path that the Energy and Commerce committee developed in the SGR legislation; however, we need a Medicare alternative payment model in oncology for that to happen. H.R. 1934 is a critical bridge to getting us to that point. I ask Congress to pass this important legislation that will lower the costs of cancer care while enhancing the quality of care for patients.

Thank you for your attention and I would be happy to answer any questions.

Changing Physician Incentives for Affordable, Quality Cancer Care: Results of an Episode Payment Model

By Lee N. Newcomer, MD, Bruce Gould, MD, Ray D. Page, DO, PhD, Sheila A. Donelan, MS, and Monica Perkins, PhD

UnitedHealthcare, Minnetonka, MN; Northwest Georgia Oncology Centers, Marietta, GA; and Center for Blood and Cancer Disorders, Fort Worth, TX

Abstract

Purpose: This study tested the combination of an episode payment coupled with actionable use and quality data as an incentive to improve quality and reduce costs.

Methods: Medical oncologists were paid a single fee, in lieu of any drug margin, to treat their patients. Chemotherapy medications were reimbursed at the average sales price, a proxy for actual cost.

Results: Five volunteer medical groups were compared with a large national payer registry of fee-for-service patients with cancer to examine the difference in cost before and after the initiation of the payment change. Between October 2009 and December

2012, the five groups treated 810 patients with breast, colon, and lung cancer using the episode payments. The registry-predicted fee-for-service cost of the episodes cohort was \$98,121,388, but the actual cost was \$64,760,116. The predicted cost of chemotherapy drugs was \$7,519,504, but the actual cost was \$20,979,417. There was no difference between the groups on multiple quality measures.

Conclusion: Modifying the current fee-for-service payment system for cancer therapy with feedback data and financial incentives that reward outcomes and cost efficiency resulted in a significant total cost reduction. Eliminating existing financial chemotherapy drug incentives paradoxically increased the use of chemotherapy.

Introduction

The cost of health care in the United States is on an unsustainable trajectory. Using current trends, economists predict that in less than 3 years, it will require 50% of the average U.S. household income to pay the costs of out-of-pocket expenses and the health insurance premium for a family.¹ Cancer therapy is a contributor to these rising costs; it accounts for 11% of UnitedHealthcare's commercial health plan budget, and the proportionate share is rising. The existing fee-for-service payment provides theoretical incentives for overuse and the selection of expensive branded drugs rather than lower cost generic medications. New payment models that reward cost-effective and high-quality treatment are needed.

One approach for cost reduction is to reduce the payment amount for each service. After Medicare decreased the reimbursement levels for drugs in 2005, an analysis of patients with lung cancer revealed that oncologists treated more patients with chemotherapy and increased the usage of expensive drugs.² The effect on quality was not measured. Medicare continues to experience increases in cancer costs, probably caused by factors like the introduction of new expensive drugs and increased numbers of beneficiaries.

Another potential solution to rising costs is paying for care by the episode. Medicare has used this approach for hospital care for more than a decade with the Diagnosis Related Groups, but the method has not been tested for chronic illness care in an ambulatory setting. Proponents argue that a fixed payment for a defined time period provides the incentive to become more efficient while limiting the provider risk to a manageable sum of money. Bach et al³ proposed a payment model for cancer ther-

apy that uses the monthly national average chemotherapy cost for each cancer type as the basis for the episode payment. This proposed system would require physicians to use lower cost regimens to remain profitable. Further, it would provide an incentive for pharmaceutical firms to reduce the prices of any medications that exceed the episode payment budget amount.

The Bach proposal attacks drug costs, but it has no effect on other cost categories for cancer care. UnitedHealthcare data suggest that these other categories are significant. For commercially insured patients, chemotherapy drugs represent 24% of total care costs, inpatient and outpatient facility services account for 54%, and physician services constitute the remaining 22%. In a previous article, Newcomer proposed a payment method that removes any adverse incentive to use expensive pharmaceuticals while simultaneously creating an incentive to reduce the total costs of care and improve outcomes.⁴ The program included a quality improvement approach that mandated an annual review and discussion of use and quality data. This article reports the results of a 3-year trial of this program.

Methods

UnitedHealthcare collaborated with five volunteer medical oncology groups for the pilot. The program changed four elements of the previous fee-for-service contract relationship. First, the medical groups proactively registered all patients with breast, colon, and lung cancer and provided clinical data to the payer. Second, a single episode payment was made at the initial visit. The method for calculating this payment is described below. Third, all drugs were paid using the average sales price rate

as a proxy for the acquisition cost of the drug. All other physician services continued to be reimbursed using the existing fee-for-service contract with the payer. Fourth, the medical groups met annually to review data on cost and quality outcomes.

The program began in October 2009, and it is described in detail in another article.⁴ One group dropped out of the program after it was acquired by an academic medical center in June 2011; it was replaced by a new medical group from another city. Nineteen clinical episodes were created for patients with breast, colon, and lung cancer (Table 1). Each medical group selected a single chemotherapy regimen for each adjuvant therapy episode on the basis of their interpretation of the medical literature. Predefined chemotherapy regimens were not selected for episodes treating metastatic disease.

Using the existing fee schedule for each group, UnitedHealthcare calculated the drug margin for each adjuvant regimen, including supportive care medications, by subtracting the average sales price from the contracted rate for the drugs. Average sales price was used as a proxy for acquisition cost in this study. UnitedHealthcare also added a small case management fee that included physician hospital care to each episode. The payer had previously created a registry of more than 65,000 patients with breast, colon, and lung cancer with sufficient clinical and claims data to assign them to the same episode categories. The national average drug margin for each episode in this registry was calculated by subtracting the aggregate average sales price from the aggregate amount paid for chemotherapy drugs and dividing by the total number of patients in each episode. If any episode payments were less than the national average, the larger amount was substituted. A specific treatment regimen was not selected for patients with metastatic cancers, so the registry national average was used as the episode payment amount for episodes 10, 11, 14, 18, and 19 (Table 1). An arbitrary reimbursement was negotiated for the two episode categories that did not use any cancer chemotherapy (episodes 1 and 12). The time period for an adjuvant episode was the time to complete the therapy plus 2 months. A recurring 4-month time period was selected for metastatic episodes.

The medical groups submitted clinical information at the time of initial patient presentation to determine the correct episode. These data included the histology, clinical stage, relevant genetic information, and intent of treatment (curative or palliative). The episode fee was paid immediately. All services were billed to UnitedHealthcare using standard fee-for-service format. Table 2 summarizes the payment methods for the services provided.

The medical groups were free to change their preferred drug regimen at any time; new studies and new drug releases did change the preferred regimens during this study. Patients could also be enrolled onto clinical trials. The new drug substitutes were paid at average sales price, but there were no changes in the episode fee. By contractual agreement, episode fees would be changed only if the groups lowered the total cost of care or improved the survival for the episode.

The oncology groups collaborated with UnitedHealthcare to develop more than 60 measures of quality and cost for these episodes (Table 3). The measures were intended to compare the

Table 1. Episode Payment Categories and Duration

Cancer Type	Episode No. and Description	Duration (months)
Breast	1. Stages 0, I; no chemotherapy	6
	2. Stages I, II; HER2 overexpression, ER/PR negative	12
	3. Stages I, II; HER2 overexpression, ER/PR positive	12
	4. Stages I, II; HER2 underexpression, ER/PR negative	6
	5. Stages I, II; HER2 underexpression, ER/PR positive	6
	6. Stage III; HER2 overexpression, ER/PR negative	12
	7. Stage III; HER2 overexpression, ER/PR positive	12
	8. Stage III; HER2 underexpression, ER/PR negative	6
	9. Stage III; HER2 underexpression, ER/PR positive	6
	10. Stage IV; anti-estrogen therapy only	4
	11. Stage IV; treatment with all other medications	4
Colon	12. Stages I, II; no chemotherapy	6
	13. Stages II, III	9
	14. Stage IV	4
Lung	15. Small-cell, any stage	4
	16. Non-small-cell, stages I, II	4
	17. Non-small-cell, stage III	4
	18. Non-small-cell, stage IV, nonsquamous histology	4
	19. Non-small-cell, stage IV, squamous histology	4

Abbreviations: ER, estrogen receptor; HER, human epidermal growth factor receptor; PR, progesterone receptor.

performance across the groups, to generate hypotheses for quality improvement and cost reduction, and to measure improved outcomes or reductions in the total cost of care.

All analytic work was completed by UnitedHealthcare. The study design used a retrospective observational method that compared the operational and control cohort during the prepilot and pilot time periods. Controls were obtained from the registry.

Table 2. Summary of Payment Method Used in Fee-for-Service and the Episode Model for Various Service Types

Service Type	Payment Method	
	Episode Model	Standard Model
Physician office visit	FFS	FFS
Chemotherapy administration	FFS	FFS
Chemotherapy medications	ASP + 0%	ASP + contracted %
Diagnostic radiology	FFS	FFS
Laboratory	FFS	FFS
Physician hospital care	Episode	FFS
Hospice management	Episode	FFS or none
Case management	Episode	None

Abbreviations: ASP, average sales price; FFS, fee-for-service.

Table 3. Quality and Use Measures From the Episode Payment Program

Each clinical episode (19 separate episodes)	Total cost of care
	Emergency room and hospitalization rates
	Parenteral drug costs per episode
Aggregate	Average drug cost per episode
	Admissions for cancer symptoms
	Admissions for treatment-related symptoms
	Time to first progression for relapsed patients
	No. of lines of therapy for relapsed patients
	Hospice days for patients who died
	Days from last chemotherapy to death
	Costs in the last 30 days of life
	Survival from date of condition enrollment (relapsed patients only)
	Cost per admission and length of stay
	Diagnostic radiology use
	Laboratory service use
	Durable medical equipment use
	Surgical services, use and cost
	Febrile neutropenia occurrence rate
	Granulocyte colony-stimulating factor usage rate
	Erythropoietin use

NOTE. All medical groups were identified in the results reporting.

Members of both cohorts had the same accrual period for each prepilot and pilot period. The baseline period for the study began with episodes starting October 2006 through July 2009, and the pilot period included episodes beginning October 2009 through December 2012. The unit of measurement for the pilot was a unique episode.

The primary metric of the pilot was total medical cost per episode of care, which excluded retail pharmacy claims. The estimated sample size to demonstrate a 10% effect was 400 observations. The secondary metric, chemotherapy drug cost (CDC), measured the cost of chemotherapy medications using the average sales price for all observations. The results for both measures were determined using the aggregate of all of the 19 episode categories.

The total medical cost was modeled as a function of the episode payment condition, age, and sex using a linear regression technique. The model included terms that indicated whether the observations were from the episode medical groups or controls and whether the observations were from the prepilot period or the pilot period. An interaction term between treatment group and time period was included and was the key term used to interpret the success of the program. The savings estimate of the pilot program was derived from the log-transformed regression model of total medical cost per episode.

Results

There were 1,024 patients enrolled in the episode program through the end of 2012. Of these, 810 patients were used in the analysis. Patients were ineligible if they had not completed a treatment episode by year end 2012 ($n = 210$), did not incur

any medical cost in the analytic time window ($n = 3$), or had an incorrect episode assignment ($n = 1$). Any differences in the patient mix, as well as differences in baseline performance, were accounted for in regression modeling.

The predicted fee-for-service total cost for the episodes cohort was \$98,121,388, but the actual total medical cost for this cohort was \$64,760,116, representing a net savings of \$33,361,272. The predicted CDC was \$7,519,504, and the actual CDC was \$20,979,417, with a net increase in spending of \$13,459,913. In a subset analysis, the control group was limited to 50 medical groups that contributed at least 70 patients to the registry—the minimal number contributed by each episode medical group. There was no difference in the results using this smaller control population.

The study was not powered to determine the expenses that drove the differences in total medical cost. A subset analysis did demonstrate a statistically valid decrease in hospitalization and therapeutic radiology usage for the episode arm.

Most quality outcomes had insufficient numbers for statistical analysis. Kaplan-Meier survival curves were monitored for all patients with metastatic disease. Lung cancer survivors were the only evaluable subgroup, and there was no significant survival difference between the episode and registry patients. Hospitalization rates showed that one medical group was an outlier for all cancer types. The group learned that follow-up appointments to their clinic were scheduled for several weeks after the initial hospital discharge, causing frequent readmissions for the same problem. The group now evaluates patients within 48 hours of discharge, and their hospitalization rates have decreased to peer levels. Overall, multiple quality measures were monitored, and none of them provided an early signal that quality of care was different than controls.

Discussion

This program had two objectives. The primary objective was to decrease the total medical cost by using aligned financial incentives supported by actionable use and quality information. This goal was met, as demonstrated by a 34% reduction of the predicted total medical cost. The secondary objective was to remove the linkage between drug selection and medical oncology income. Without this linkage, it was expected that CDC trends would decrease. Paradoxically, the pilot resulted in 179% more CDC than predicted when compared with the controls. Despite the additional \$13 million for chemotherapy drugs, the total medical costs were reduced by \$33 million.

The source of the cost savings is enigmatic. The primary end point of the study was detection of a 10% change in the total medical costs for the aggregate group. Subset analyses confirmed statistically valid decreases in hospitalization and usage of therapeutic radiology, but it is not possible to make a statistically valid quantification of the savings. The study used two interventions—financial incentives and data sharing—to change behavior. It is not possible to determine the relative effect of each incentive, but this is an important question to answer in future studies.

The five groups met twice during the study period to review and analyze more than 60 measures of cost, quality, and use.

They had not been exposed to performance data about their practice from any source before joining this project. This measurement may have been the stimulus to improve results. This phenomena, known as the Hawthorne effect, is defined as, "the stimulation to output or accomplishment that results from the mere fact of being under observation."⁵ During the meetings, the group leaders discussed potential solutions for variation, and they later shared the data with their practice partners. The regular measures for this payment model may have stimulated different care decisions by the participating physicians.

Larger medical oncology groups like those in this study may have more sophisticated internal resources than smaller groups. For example, larger groups could allow their physicians to focus on specific cancers or they can augment their electronic medical record systems with decision support tools. However, when the comparison group in the registry was restricted to larger medical groups, the results did not change.

Improvement projects by the individual medical groups were not tracked by the study team. Anecdotally, the ability to improve specific performance issues was mixed. The group with high hospitalization rates discussed above is an example of a successful intervention. The use of diagnostic radiology was more problematic. The analyses demonstrated a four-fold variation in the use of diagnostic radiology procedures during the 4-month episode for metastatic disease in all three cancer types. The physician leaders for the medical groups were unable to obtain consensus about defined intervals for radiological evaluation of metastatic disease.

Collaboration was an essential element to the success of the pilot. The data for the project were available to all participants. Variation was explicitly discussed as an opportunity for improvement and not a failure of health care delivery. Problem solving involved the participation of physicians, the medical group business executive, nursing staff, and payer staff. We believe that collaboration was an essential element to obtaining the result.

The increased CDC was not expected. The episode payment program contains several incentives for decreased chemotherapy costs. First, if the selection for a chemotherapy regimen yielded a lower drug margin than the UnitedHealthcare national average for the episode, the group's episode payment was raised to the national average, providing an incentive to select low-cost regimens when appropriate. Second, the oncology practices did not realize any gains by switching to higher priced drugs. Third, the metastatic episode payments continued every 4 months even if the patient was no longer receiving chemotherapy. This policy was intended to compensate the oncologist for the additional work of palliative care. All of these incentives encouraged lower drug expenses.

Can this pilot be generalized? The operational work for this project was substantial. Early identification of the patients was essential to ensure the correct treatment regimen and to explain the unusual claim payments. Claims had to be adjusted by both the payer and the physician's office to conform to the episode payment methods. Claim adjudication was done manually for the

same reason. The work load required dedicated time and resources for both payer and medical groups. However, automation of enrollment and claims payment is possible and essential to further generalization.

The episode payment project yielded significant savings for the treatment of patients with cancer without any measurable effect on quality outcomes or toxicity. This study challenges the assumption that any reduction of resources results in worse outcomes for cancer. Further, this approach allowed each medical group to seek the solutions that worked best for their environment. Although the pilot should be replicated to answer the questions about generalization, this study proves the essential concept that the cost of care for future generations can be reduced without sacrificing quality.

Acknowledgment

We thank the following oncology medical group participants: Scott Parker, Northwest Georgia Oncology, Atlanta, GA; Barry Russo, Tammy Chambers, Center for Cancer and Blood Disorders, Fort Worth, TX; Marcus Neubauer, MD, John Hennessy, Kansas University, Kansas City, KS; Charles Bane, MD, Josh Cox, Robert Baird, Dayton Physicians, Dayton, OH; Lee Schwartzberg, MD, Jamie Chandler, West Clinic, Memphis, TN; Leonard Kalman, MD, Maggy Pons, Advanced Medical Specialties, Miami, FL.

Authors' Disclosures of Potential Conflicts of Interest

Although all authors completed the disclosure declaration, the following author(s) and/or an author's immediate family member(s) indicated a financial or other interest that is relevant to the subject matter under consideration in this article. Certain relationships marked with a "U" are those for which no compensation was received; those relationships marked with a "C" were compensated. For a detailed description of the disclosure categories, or for more information about ASCO's conflict of interest policy, please refer to the Author Disclosure Declaration and the Disclosures of Potential Conflicts of Interest section in Information for Contributors.

Employment or Leadership Position: Lee N. Newcomer, United-Healthcare (C); Sheila A. Donelan, United-Healthcare (C); Monica Perkins, United-Healthcare (C) **Consultant or Advisory Role:** None **Stock Ownership:** Lee N. Newcomer, United-Healthcare; Sheila A. Donelan, United Health Group; Monica Perkins, United-Health Group **Honoraria:** None **Research Funding:** None **Expert Testimony:** None **Patents, Royalties, and Licenses:** None **Other Remuneration:** None

Author Contributions

Conception and design: Lee N. Newcomer, Bruce Gould, Ray D. Page, Sheila A. Donelan, Monica Perkins

Collection and assembly of data: All authors

Data analysis and interpretation: Lee N. Newcomer, Sheila A. Donelan, Monica Perkins

Manuscript writing: All authors

Final approval of manuscript: All authors

Corresponding author: Lee N. Newcomer, MD, United-Healthcare, 9700 Health Care Lane, Mail Route MN017-W700, Minnetonka, MN 55343; e-mail: Lee_newcomer@uhc.com.

DOI: 10.1200/JOP.2014.001488; published online ahead of print at jop.ascopubs.org on July 8, 2014.

References

1. Young RA, DeVoe JE: Who will have health insurance in the future? An updated projection. *Am Fam Med* 10:156-162, 2012
2. Jacobson M, Earle CC, Price M, et al: How Medicare's payment cuts for cancer chemotherapy drugs changed patterns of treatment. *Health Aff (Millwood)* 29:1394-1402, 2010
3. Bach PB, Mirkin J, Luke J: Episode-based payment for cancer care: An opportunity for medicare to cut costs without hurting quality. *Health Aff (Millwood)* 30:1-10, 2011
4. Newcomer LN: Changing physician incentives for cancer care to reward better patient outcomes instead of use of more costly drugs. *Health Aff (Millwood)* 31:780-785, 2012
5. Hawthorne effect: <http://www.merriam-webster.com/dictionary/hawthorneeffect>



COME HOME

Innovative Oncology Business Solutions, Inc.



The COME HOME Program – External Evaluation, Evolving Outcomes

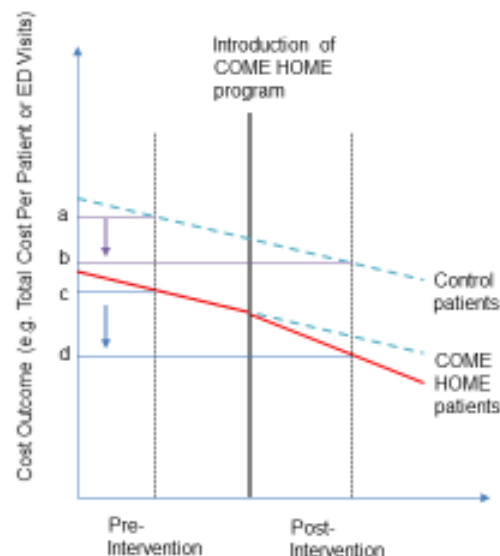
September 2015

Barbara McAneny, MD

www.comehomeprogram.com

Pre-Post Difference-in-Differences Analysis

- Comparing utilization and cost outcomes for patients at COME HOME practices before and after introduction of the new model to those observed for matched patients from non-COME HOME practices
- Normalized to patients' utilization pre-intervention (i.e. pre cancer diagnosis).
- Includes Data for 50% of evaluation period, through December 2014.



$$DID\ Impact = (Outcome_d - Outcome_c) - (Outcome_b - Outcome_a)$$

Patient Characteristics

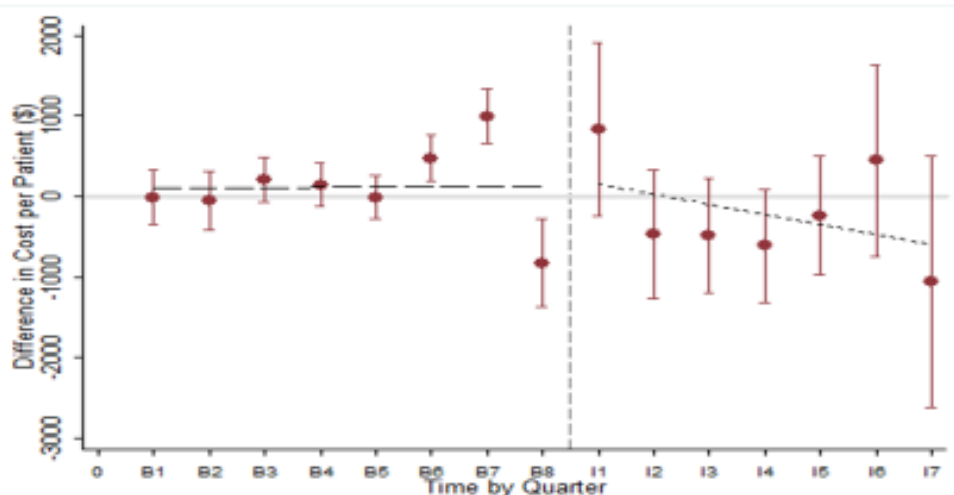
	COME HOME	Controls		COME HOME	Controls
Number of Pts	3,488	3,488	Demographic		
Cancer Type			< 65 yrs	9.3%	9.3%
Breast	42.3%	42.3%	65 – 74 yrs	49.6%	50.0%
Colorectal	13.2%	13.2%	75 – 84 yrs	31.3%	31.1%
Lung	25.6%	25.6%	≥ 85 yrs	10.0%	9.6%
Other	18.9%	18.9%	White	90.0%	89.6%
Cancer Tx			Female	69.1%	69.1%
Surgery	48.4%	49.8%	Dually Eligible**	15.7%	13.7%
Radiation	31.9%	32.5%	Comorbidity and Disability		
Chemotherapy	58.1%	58.9%	HCC* Score (SD)	2.61 (2.29)	2.62 (2.35)
Severity			Disability	16.5%	16.6%
% Metastatic	33.4%	33.9%	Utilization and Cost in Prior Year		
			Medicare Cost	17,101	16,644
			IP Admits/1000	509	550
			ED Visits/1000***	836	674

*HCC: Hierarchical Condition Categories

** p<0.05

***p<0.01


Difference in Adjusted Total Cost of Care per Patient for COME HOME by Quarter



How COME HOME Practices Compare to Controls, pre- and post-intervention

	Pre-Intervention	Post-Intervention	Difference In Differences (95% CI)
Hospitalizations per 1,000 Patients	CH patients have 3 fewer than controls	CH patients have 10 fewer than controls**	-7 (-9, 3)
ED Visits per 1,000 Patients	CH patients have 17 more than controls	CH patients have 11 more than controls**	-6 (-16, 3)
30-day Readmissions per 1,000 Patients Hospitalized	CH patients have 10 more than controls	CH patients have 23 fewer than controls	-33 (-66, -1)**
ACS Hospitalizations per 1,000 Patients	CH patients approximately equal to controls	CH patients have 3 fewer than controls	-3 (-7, 0.4)
Total Cost of Care per Patient	CH patients \$167 higher than controls	CH patients \$139 lower than controls	-\$306 (-938, 227)

***p<0.01; **p<0.05; *p<0.1

Innovative Oncology Business Solutions, Inc. 

Conclusions

- COME HOME patients show a statistically significant reduction in 30 day readmissions, compared with matched controls.
- COME HOME patients show trends toward reduction across all other reported utilization measures, including:
 - Hospitalization Rate
 - ED Visit Rate
 - ACS Hospitalization Rate
 - Total Cost of Care

COME HOME 
Innovative Oncology Business Solutions, Inc.