

Appendix D: The Reveal of Coverage

Appendix to

TESTIMONY

of

JAMES W. STEGEMAN

PRESIDENT OF COSTQUEST ASSOCIATES

Before the

SUBCOMMITTEE ON TELECOMMUNICATIONS AND TECHNOLOGY

UNITED STATES HOUSE OF REPRESENTATIVES

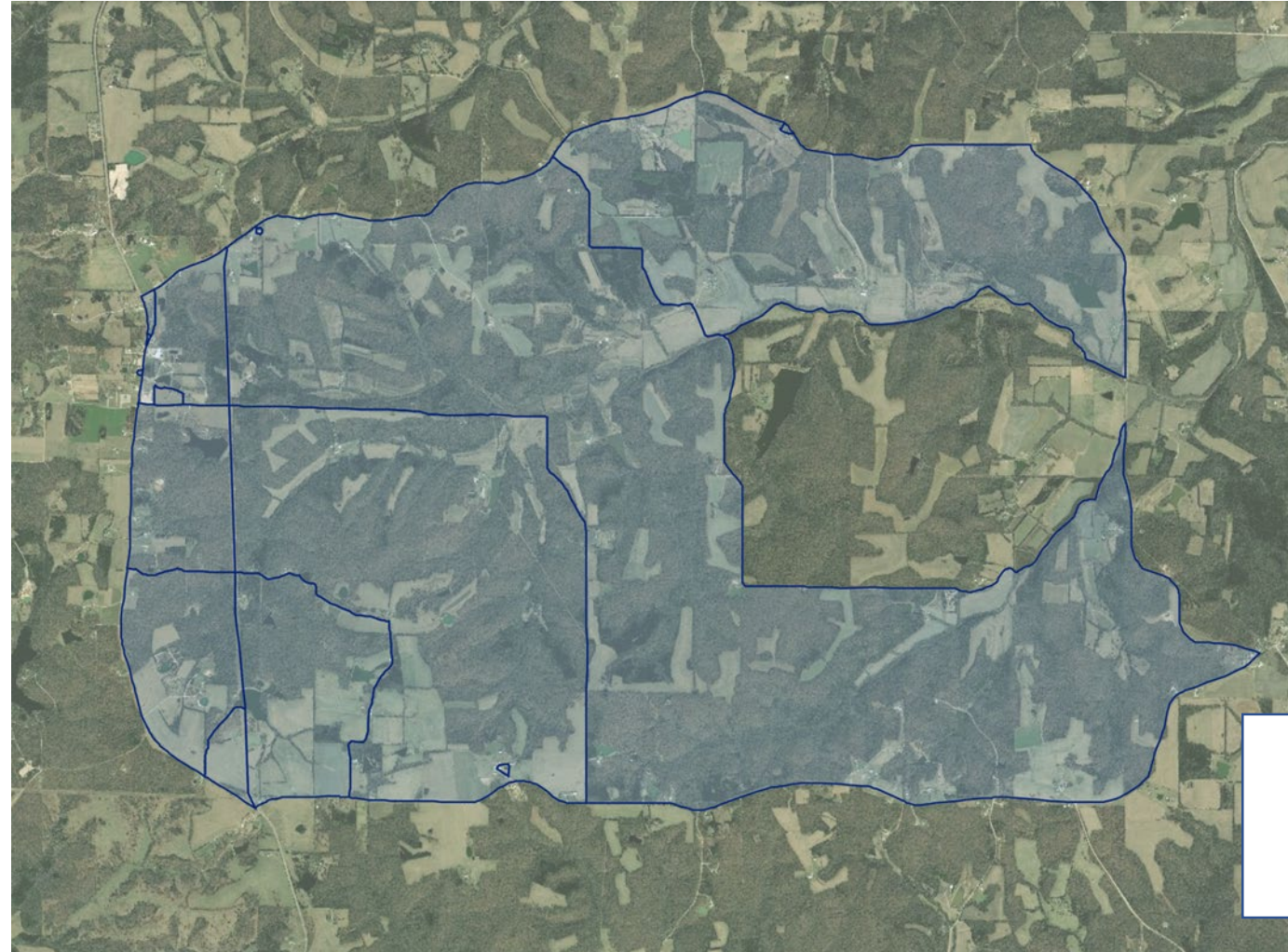
September 11, 2019

Key Pilot Findings – Unserved Locations Now Viewable

~10 Census Blocks
in MO that would
be identified as
SERVED in today's
477

"One-served,
All-served"

*Blue shaded area
represents the
coverage of the 10
Census Blocks*



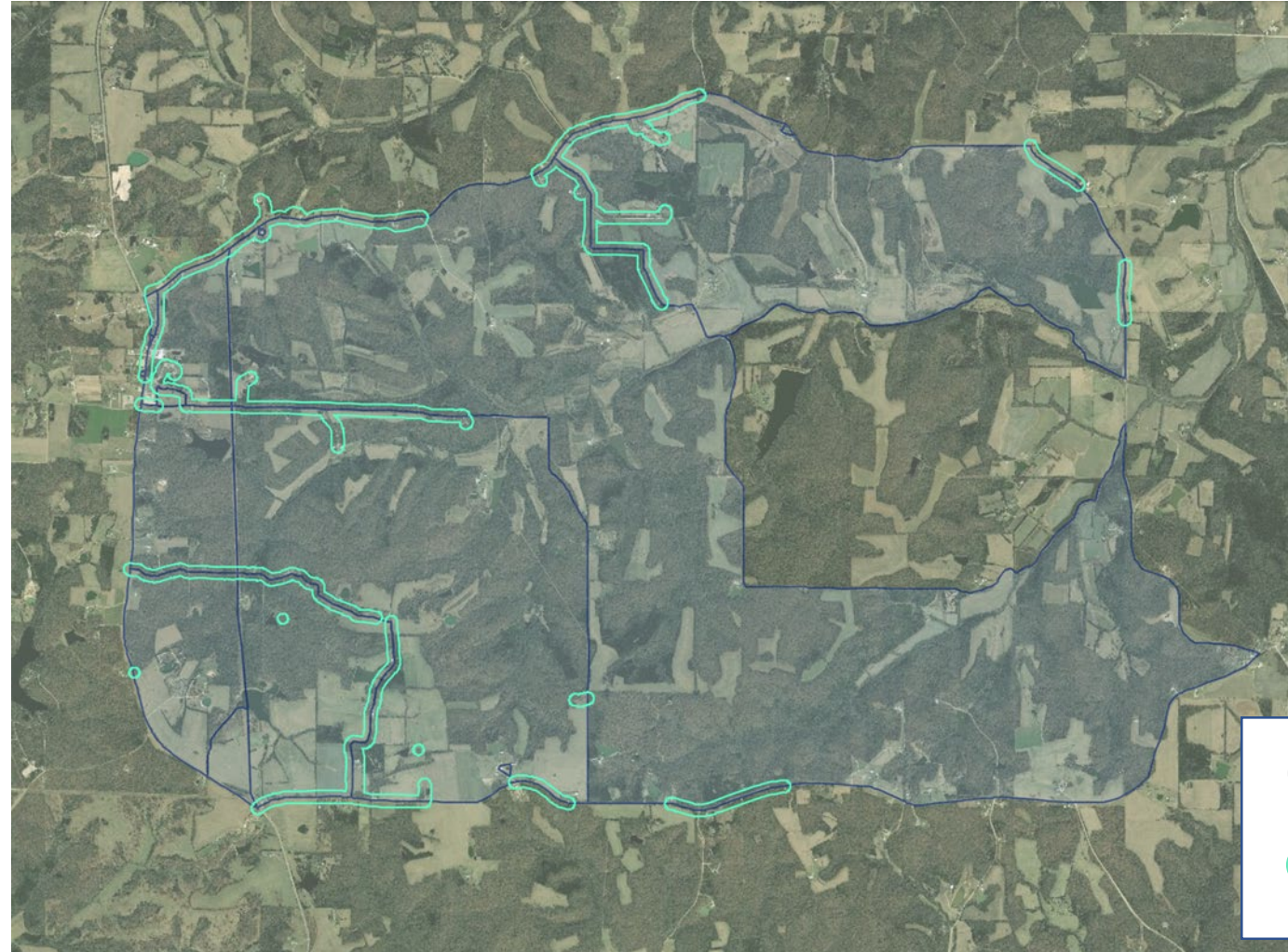
Coverage Area: ~10
Census Blocks

Key Pilot Findings – Unserved Locations Now Viewable

Potential DODC
Polygon Coverage
approach for these
10 census blocks

Polygons based on:

- Served carrier geocoded addresses
- 150ft buffers on roads touched by geocoded points

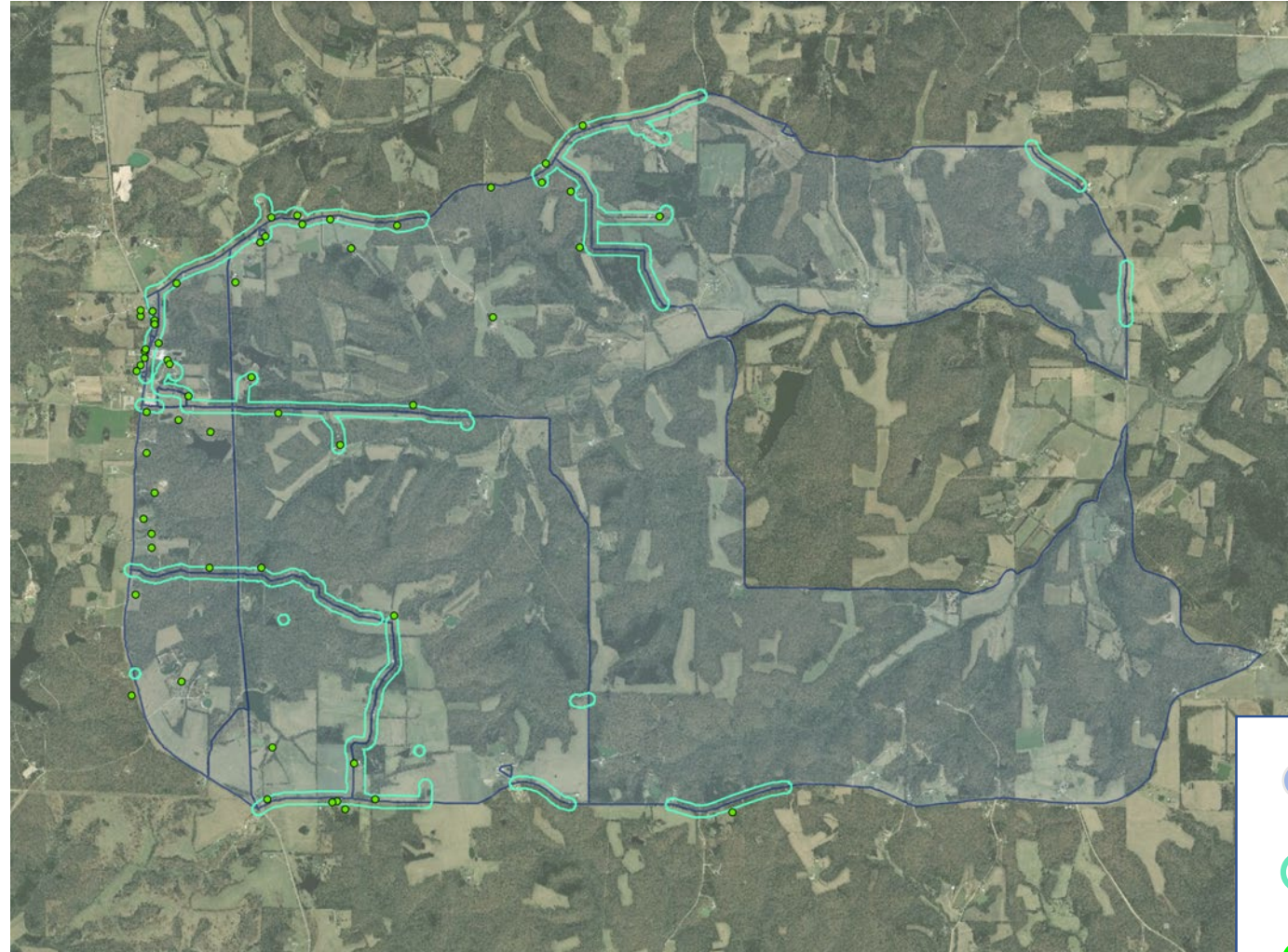





Key Pilot Findings – Unserved Locations Now Viewable

Polygons are created using address geocoding in these 10 census blocks

Green dots represent Fabric locations associated with addresses used to create polygons

It is clear the polygons based on poor geocoded information will misinform

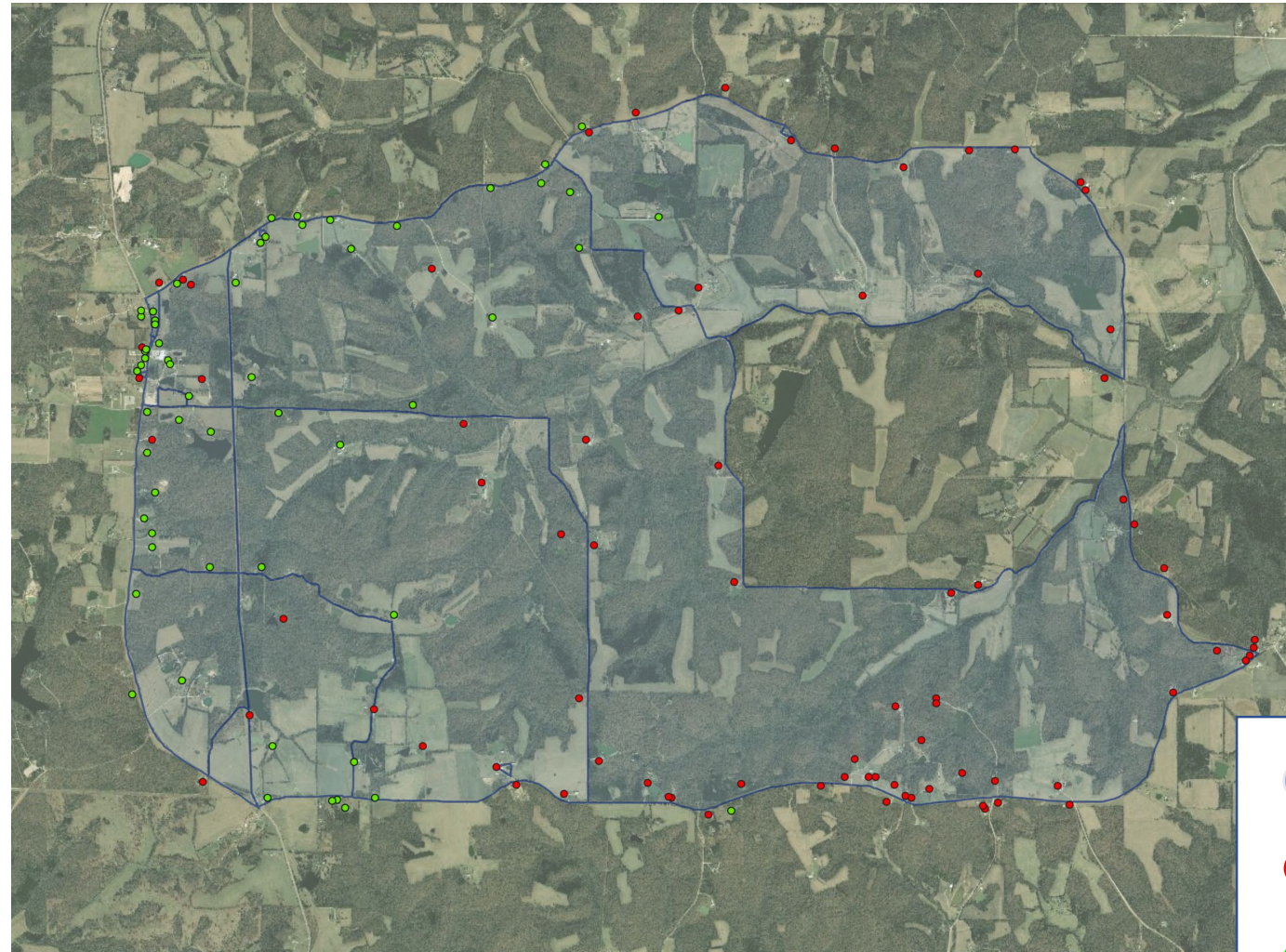





-  Coverage Area: 10 Census Blocks
-  Coverage Polygons: Geocoded Addresses
-  Fabric Locations

Key Pilot Findings – Unserved Locations Now Viewable

The BIG COVERAGE REVEAL

The Fabric combined with carrier information allows us to now see extent of the of Served (green dots) and more importantly the Unserved (red dots) locations in this 10 Census Block area



-  Coverage Area: 10 Census Blocks
-  Unserved Fabric Locations
-  Served Fabric Locations