

Appendix E: Polygons

Appendix to

TESTIMONY

of

JAMES W. STEGEMAN

PRESIDENT OF COSTQUEST ASSOCIATES

Before the

SUBCOMMITTEE ON TELECOMMUNICATIONS AND TECHNOLOGY

UNITED STATES HOUSE OF REPRESENTATIVES

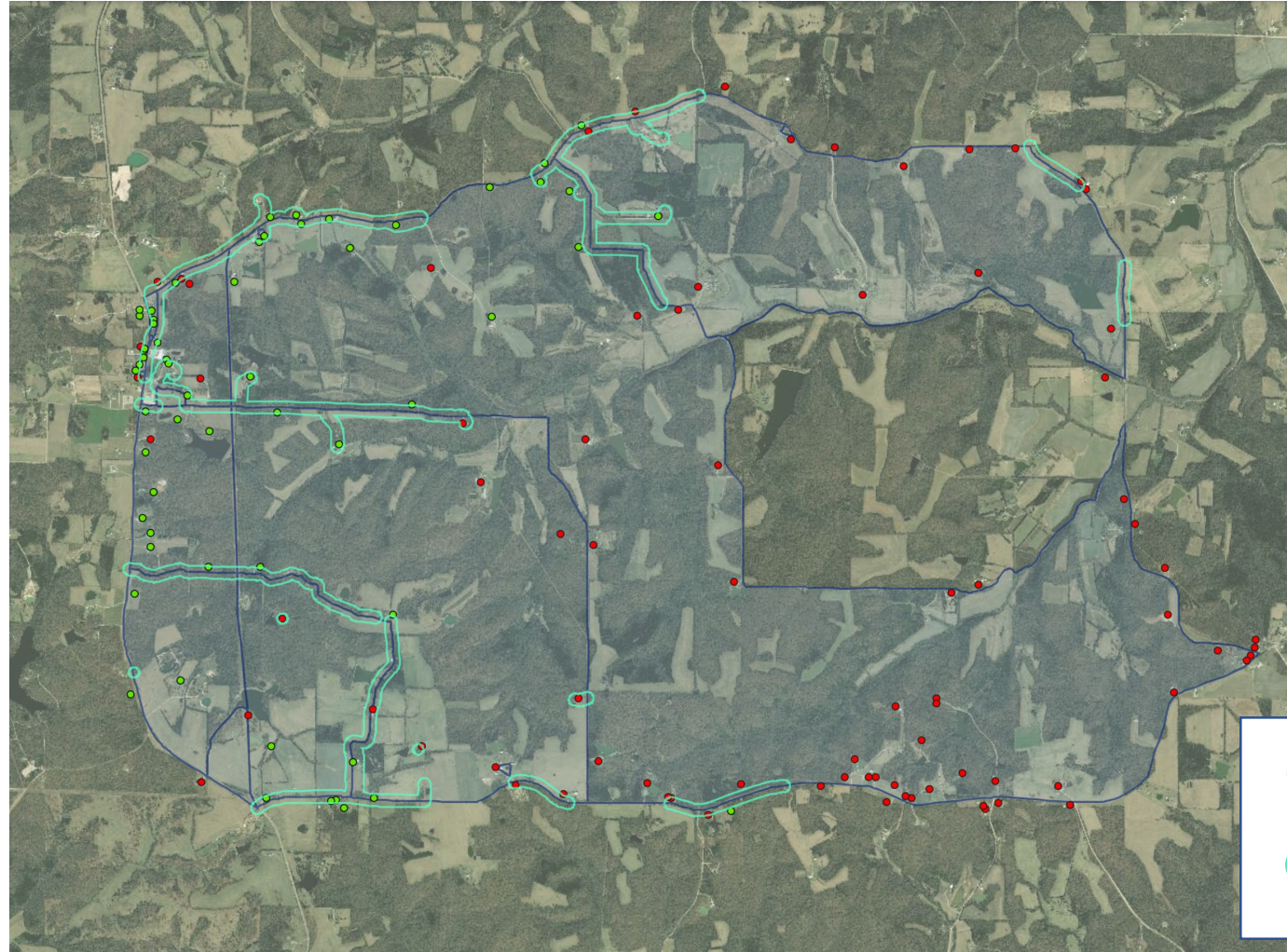
September 11, 2019

Polygons: Geocoded Addresses

The FCC's DODC order will required carriers to file polygons representing served areas. However, methods and basis have not been settled.

Polygons based on:

- Served carrier geocoded addresses
- 150ft buffers on roads touched by geocoded points



Coverage Area:
10 Census Blocks



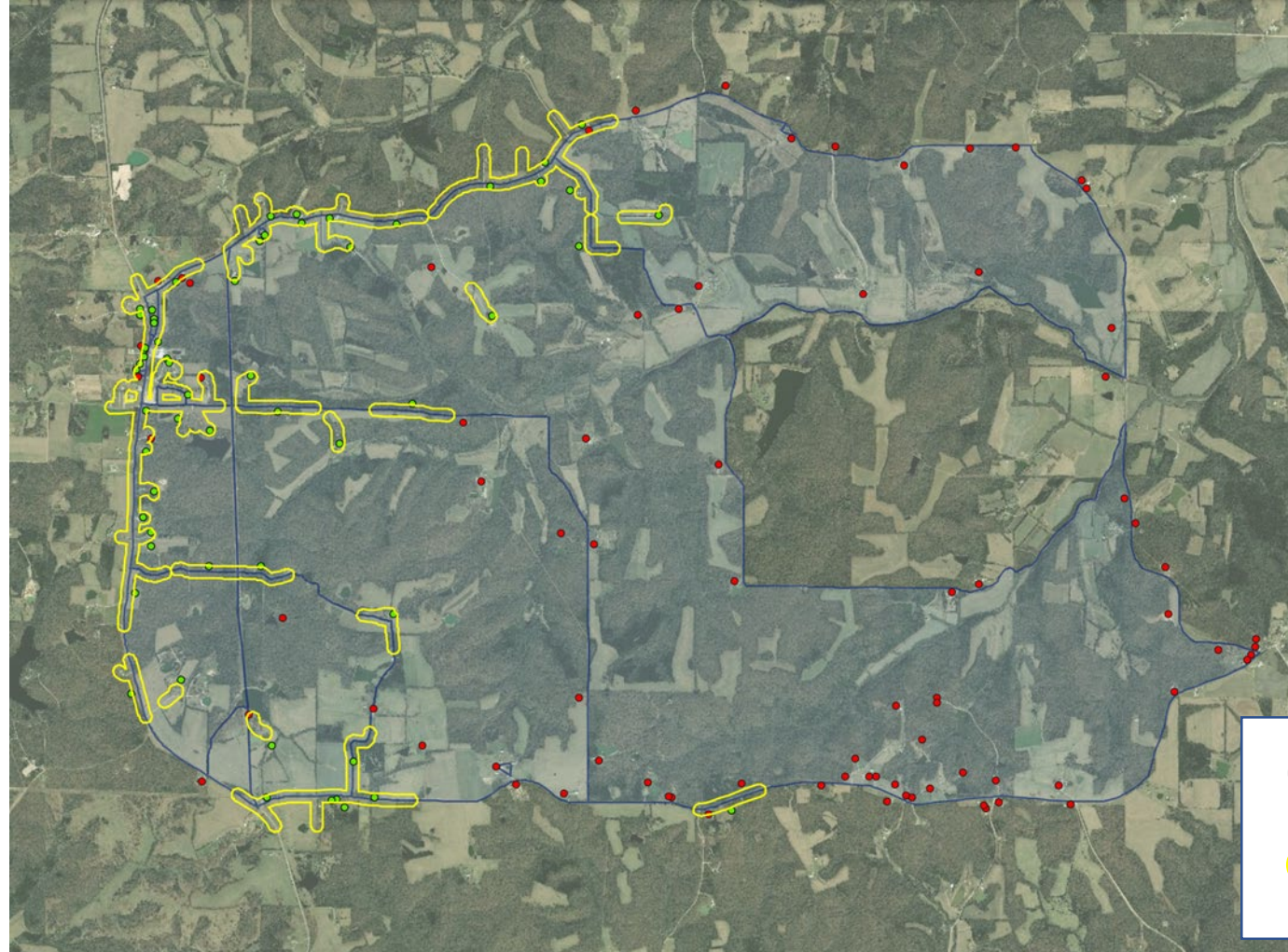
Coverage Polygons:
Based on Geocoded
Addresses



Polygons: Segments Based on Fabric Locations

The FCC's DODC order will required carriers to file polygons representing served areas
However, methods and basis have not been settled

Polygons based on:

- Served Fabric locations
- 150ft buffers about road segments touched by a Fabric point



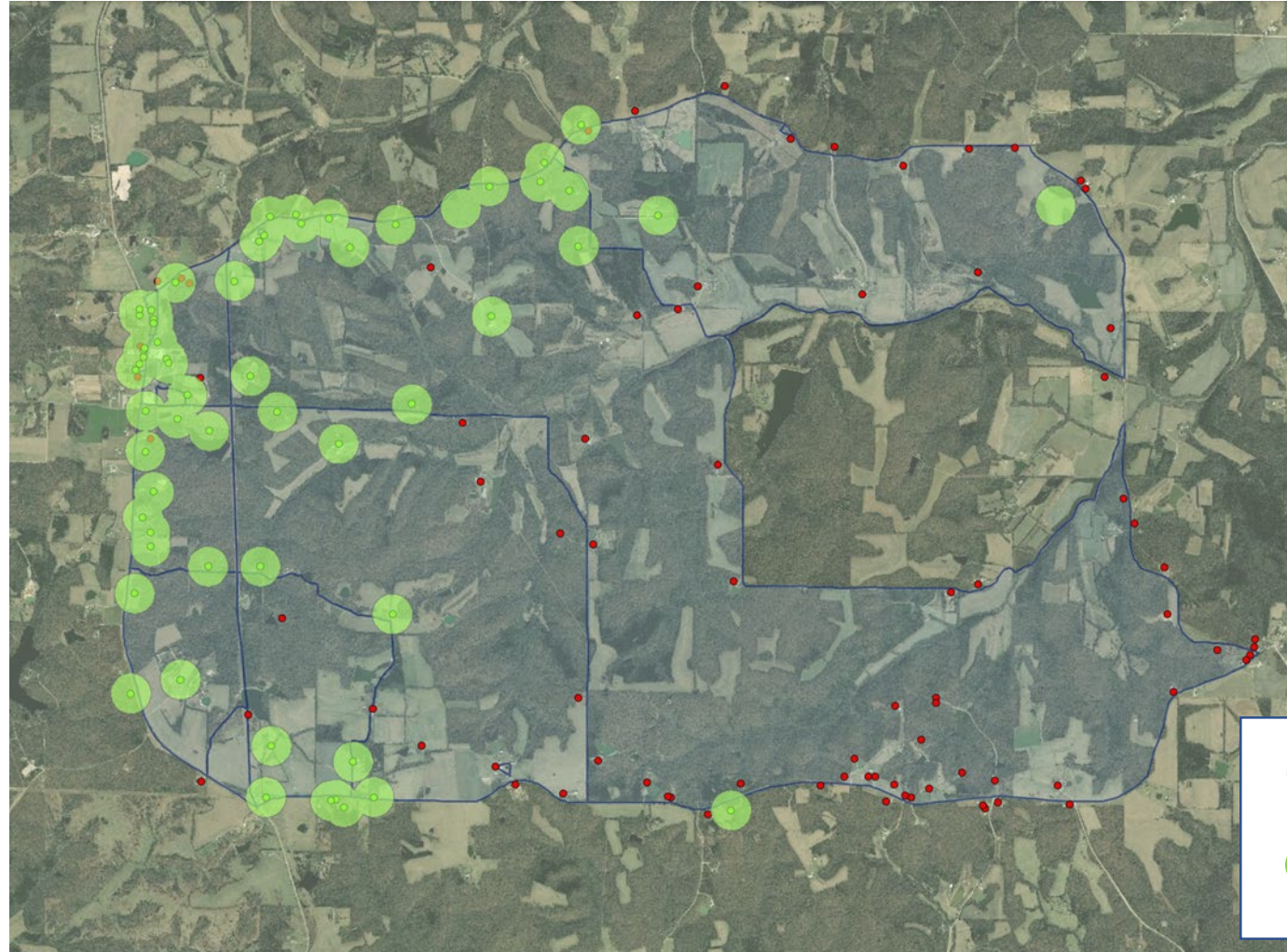
-  Coverage Area:
10 Census Blocks
-  Coverage Polygons:
Segments Based on
Location Points



Polygons: “Pearls” Based on Fabric Locations

The FCC’s DODC order will required carriers to file polygons representing served areas
However, methods and basis have not been settled

Polygons Based on:

- Served Fabric locations
- 150ft buffers about the latitude and longitude of the Fabric point



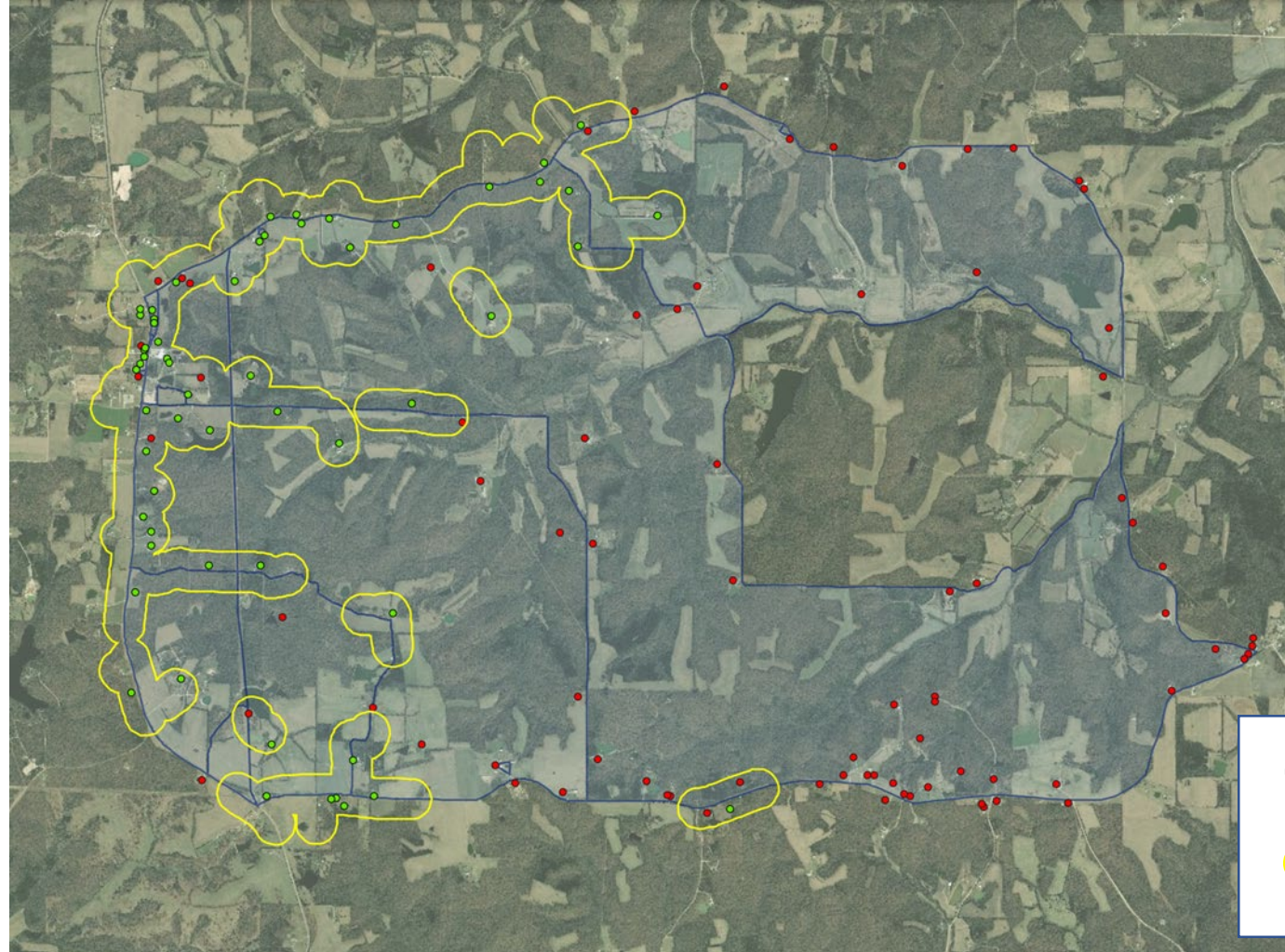
-  Coverage Area:
10 Census Blocks
-  Coverage Polygons:
Pearls Based on Location
Points

Polygons: Segments Based on Fabric Locations

The FCC's DODC order will required carriers to file polygons representing served areas
However, methods and basis have not been settled

Polygons Based on:

- Served Fabric locations
- 500ft buffers about road segments touched by a Fabric point



Coverage Area:
10 Census Blocks



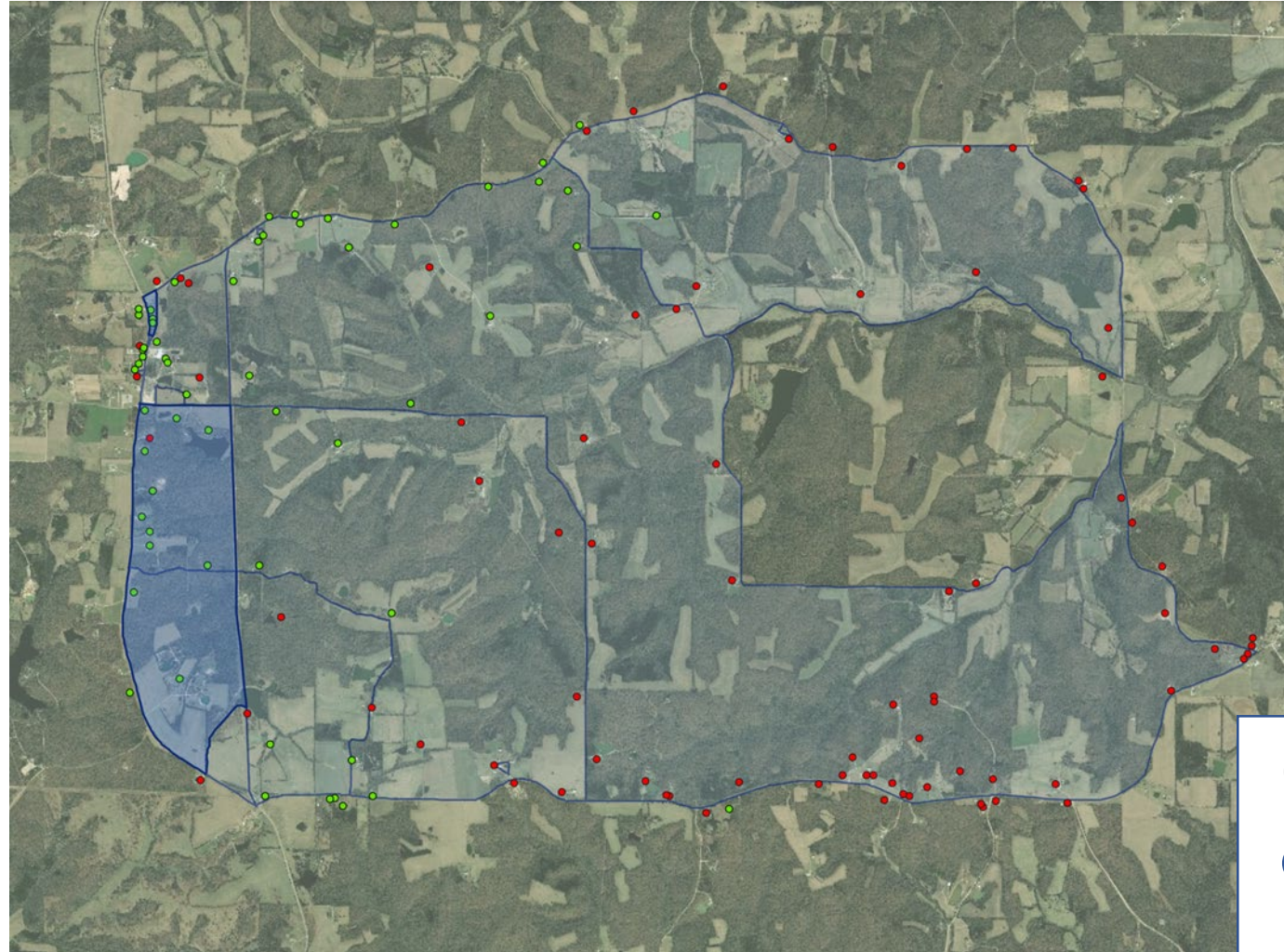
Coverage Polygons:
Segments Based on
Location Points

Polygons: Blocks Based on Fabric Locations

The FCC's DODC order will required carriers to file polygons representing served areas
However, methods and basis have not been settled

Polygons Based on:

- Served Fabric locations
- Census Blocks with more than 80% of Fabric points served



Coverage Area:
10 Census Blocks



Coverage Polygons:
Based on Census Blocks
with 80% coverage of
Location Points

Address Search

With the Fabric and Fabric based coverage polygons, the consumer will now have a clear view of broadband availability

